

EVOLUM®**HT 25 Twin-screw Extruder****Screws diameter (D)
25 mm**

EVOLUM HT 25 (barrel opening with sliding beam)

- **Screws diameter (D): 25 mm**
- **Screw elements pitch (P) : 0.5 D, 0.75 D, 1 D, 1.25 D**
- **Barrel module length (L) : 100 mm (4D)**
- **Available L/D from 24:1 to 40:1**
- **Maximum operating pressure : 275 Bar**



- **Motors up to 27 Kw**
- **Maximum speed up 1200 rpm.**

Standard version (fixed frame) or H version (hydraulic opening barrel)

Hydraulic slide : allowing quick opening of the extruder barrel and direct access to the screws (H. series)
Fixed frame : screws on shafts can be withdrawn from barrel by pulling them from the extruder front



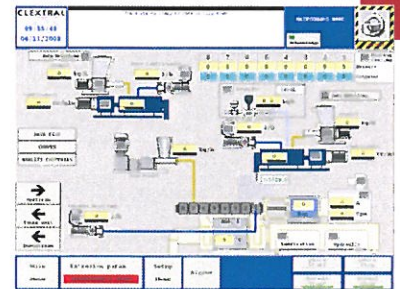
Operator interface terminal :

Located on the machine frame, reducing overall space required for control cabinets



PLC control of the extrusion unit :

The parameters of the **extrusion unit** are controlled through a PLC system using **Clextoral control software FITSYS PLUS**



PLC + Industrial Computer software : FITSYS PLUS

Operator interface terminal : computer screen
Control of the extrusion unit can be connected to supervision upstream and downstream the production line
MES



www.clextoral.com

Turn key processing lines - Twin-screw Extruders, Dryers and ancillary equipment - Process assistance & Services